

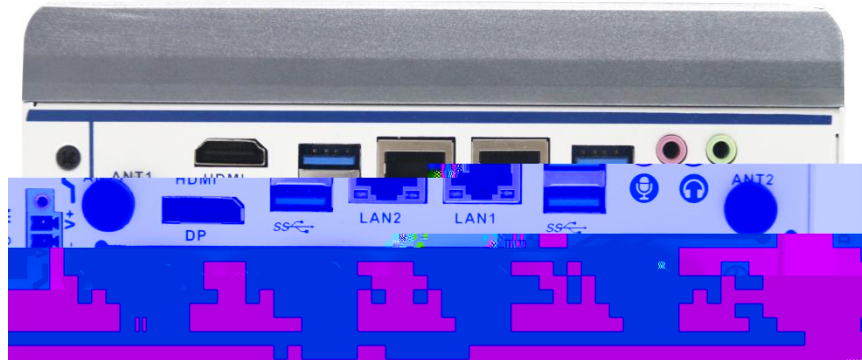
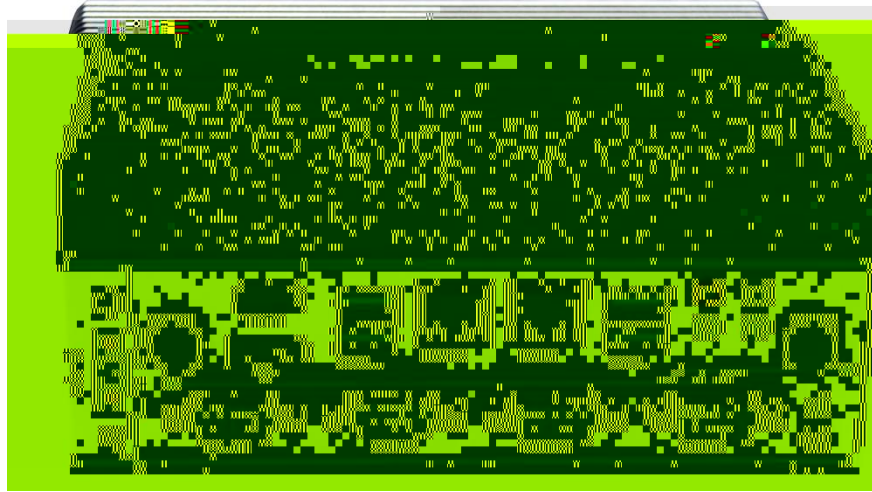


2.1

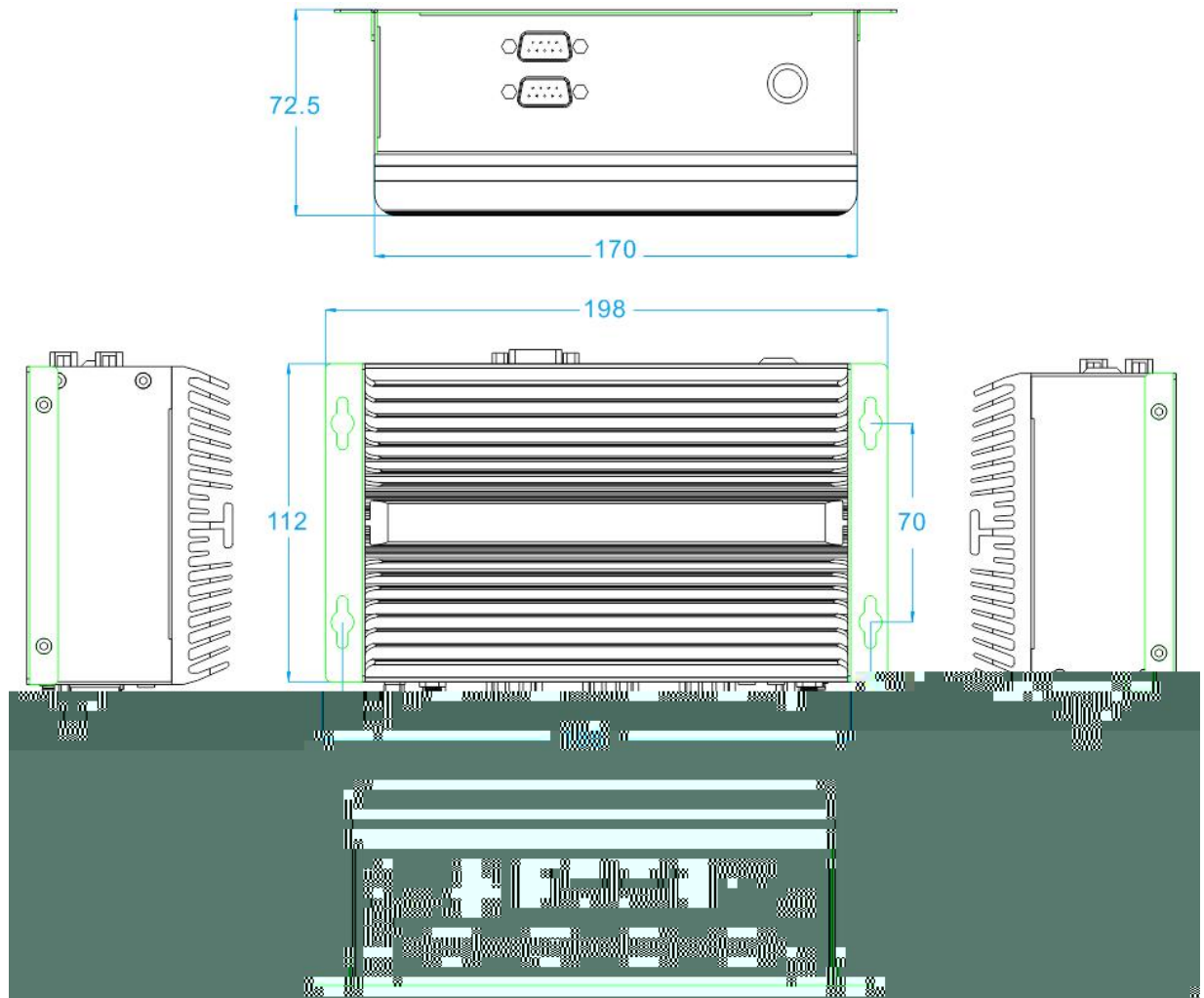
2.2

3

3.1



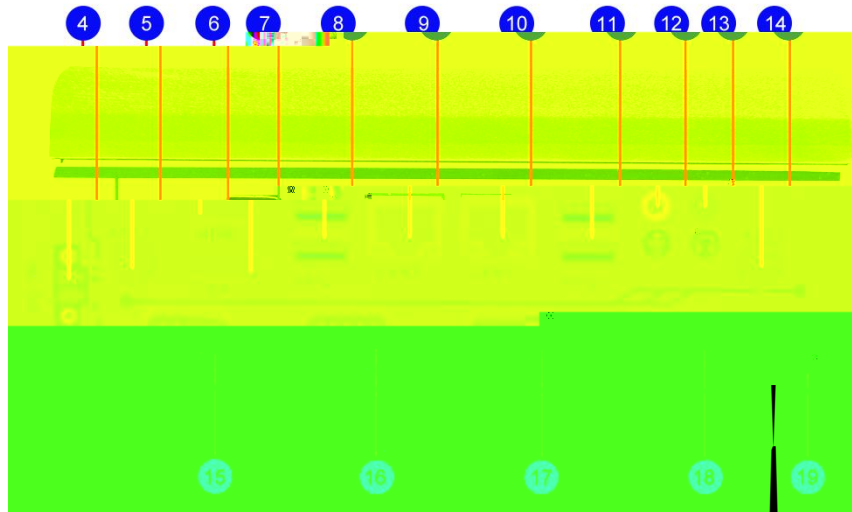
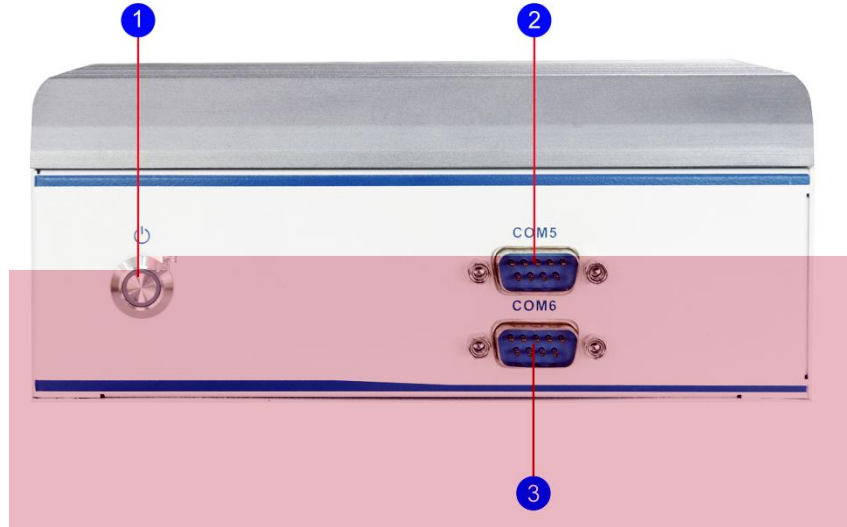
3.2



mm

4

4.1



4.2

1 COM



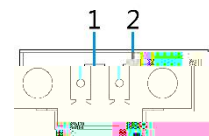
2 USB

3 HDMI

4

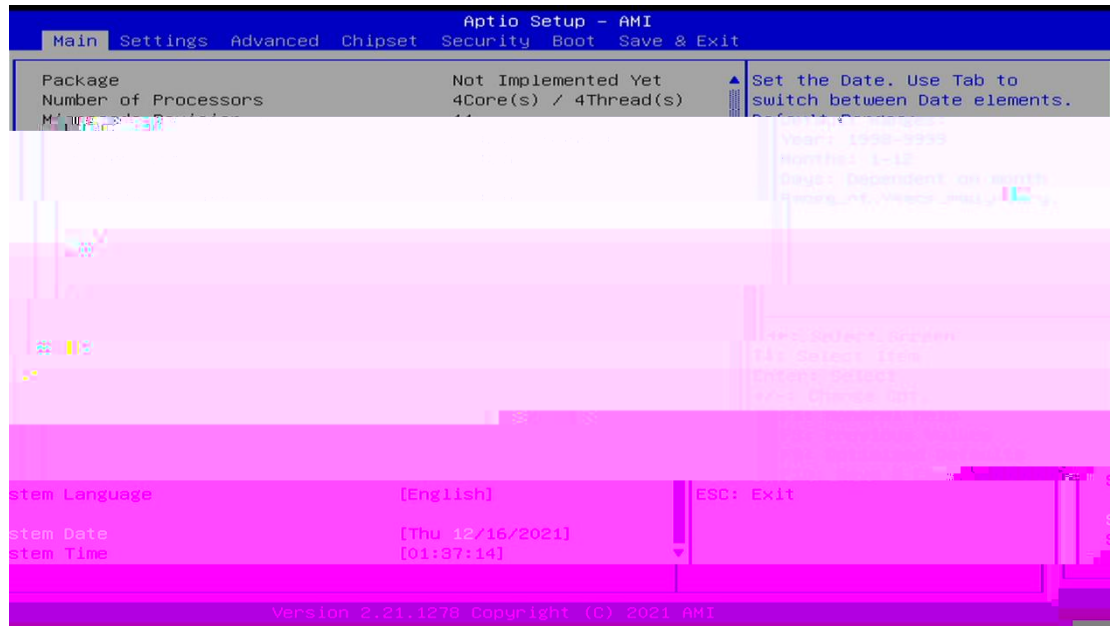
5

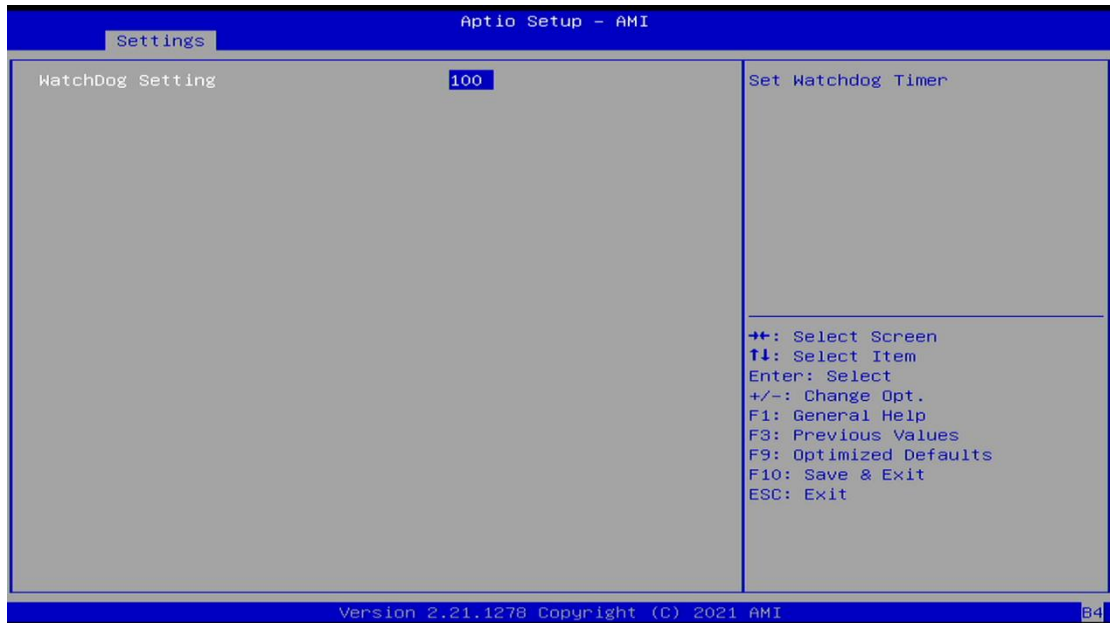
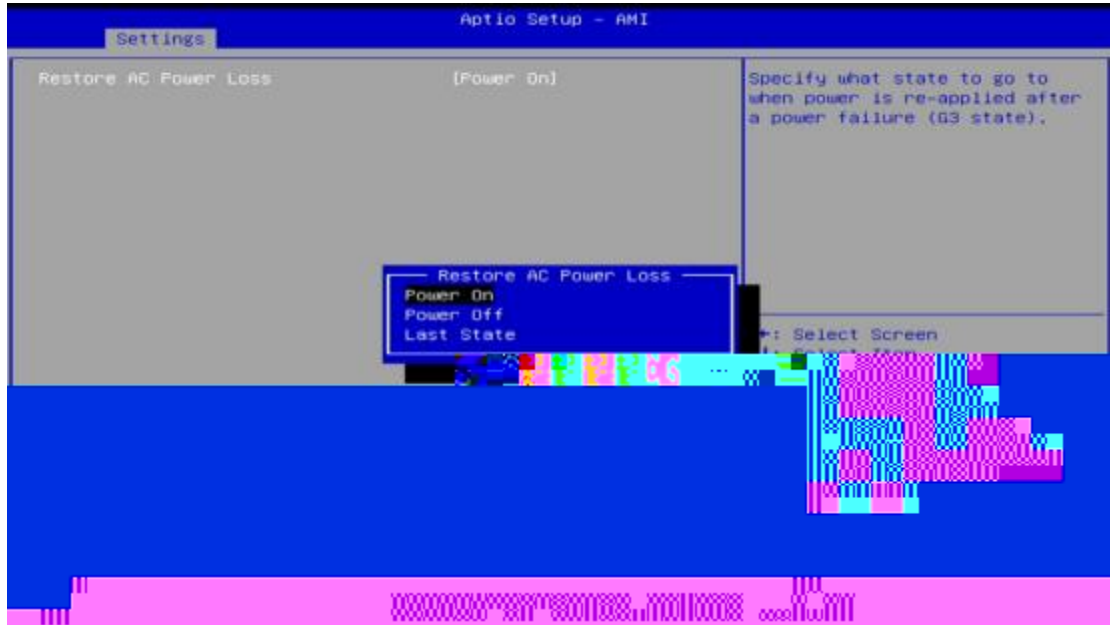
JP/CN	pin#	Signal
DC_IN	1	GND
	2	9~36V



5 BIOS

5.1

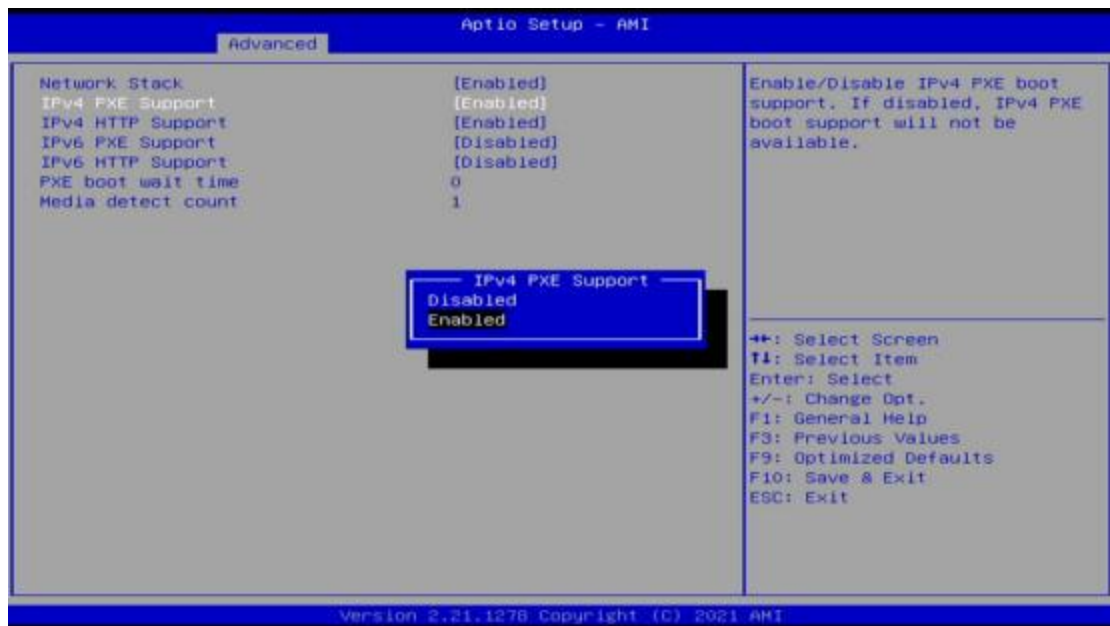
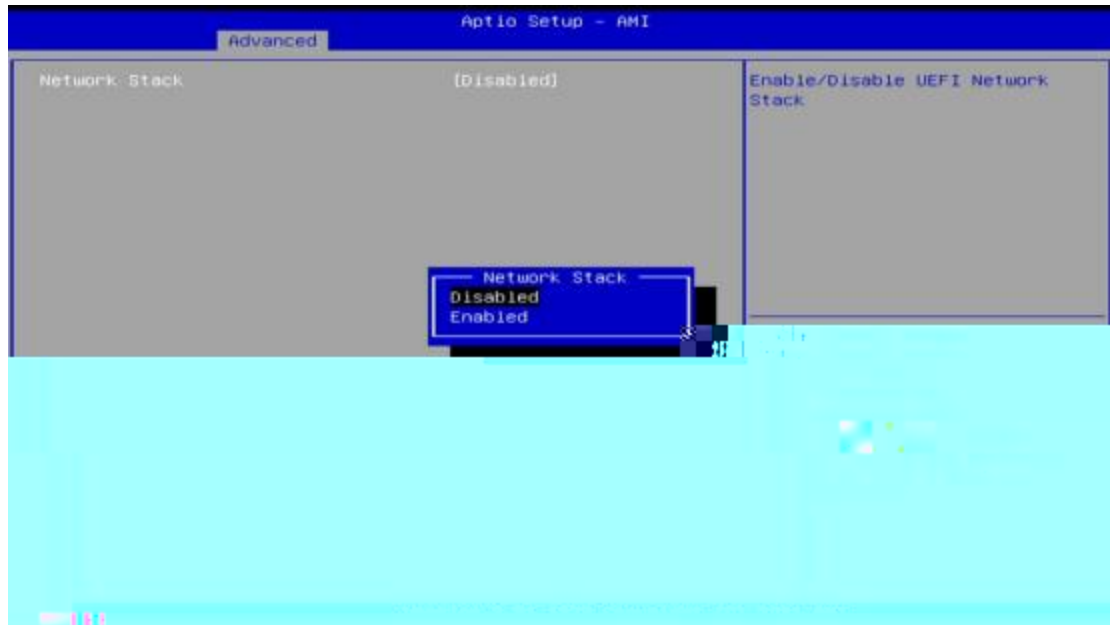




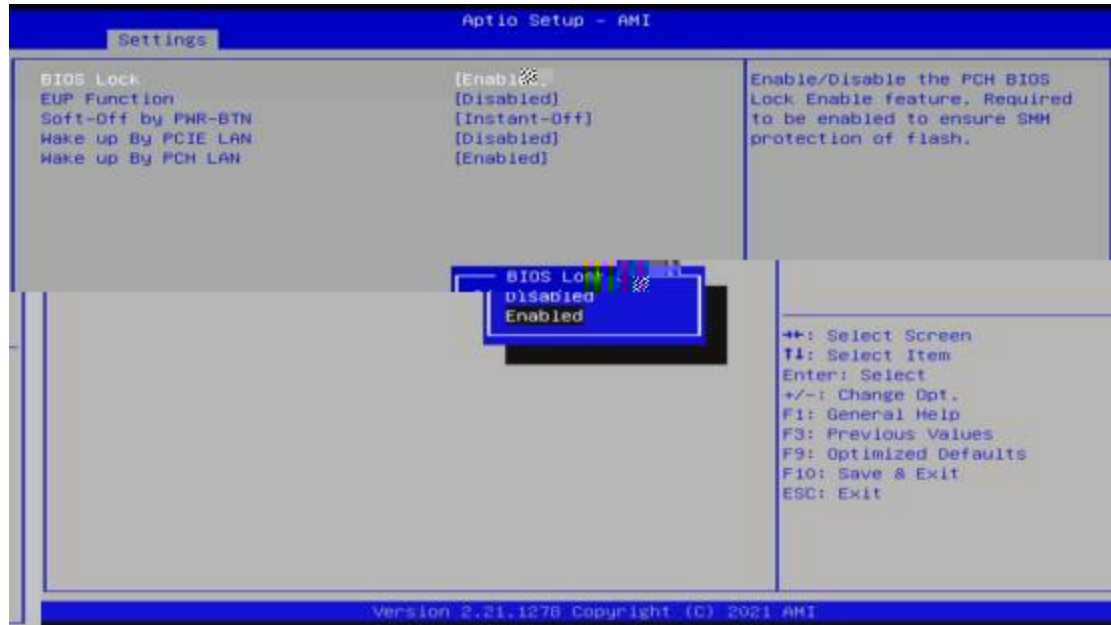
定时开机功能



启动功能（无盘启动）

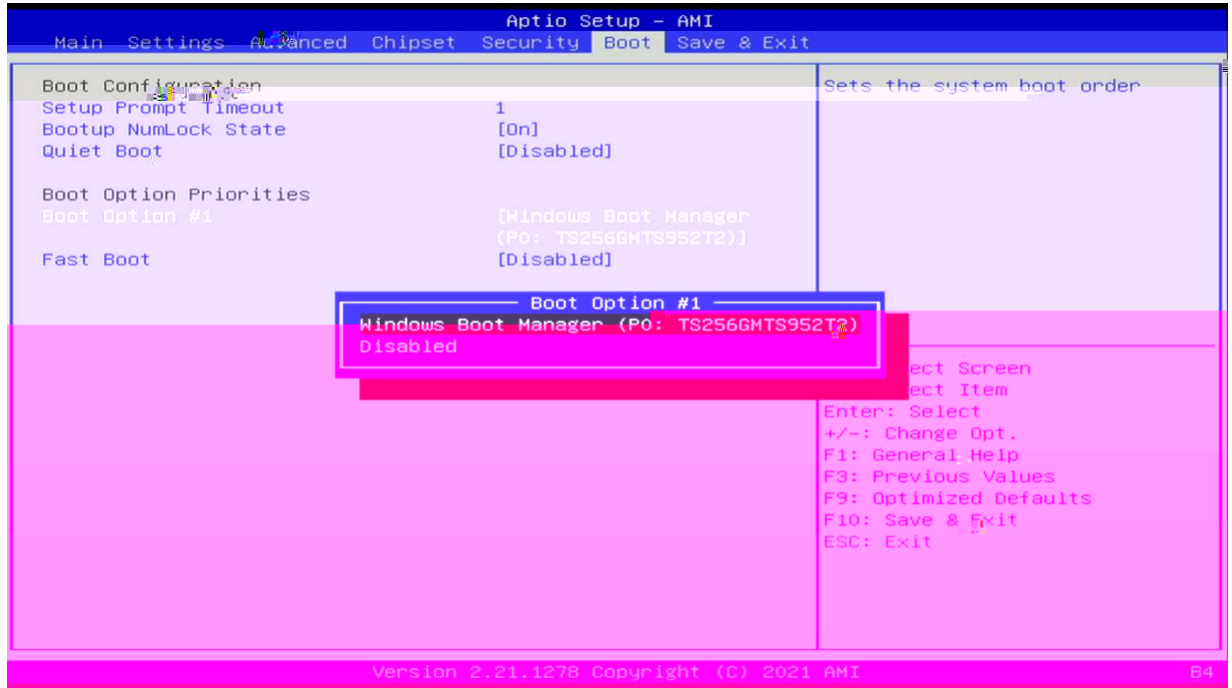


5 刷写关闭 写保护功能



5.3

设置功能



共享内存设置功能

